



OCTOBER 2023

This issue:

HEARTBEAT 45+ CPR

GRANITE WAY

STRAIGHT TO THE
PENSINSULAR

UPCOMING TRIPS
& MORE!

Lookouts, Lakes & Lunch

Hanna Silversides

Well, this little day trip took on a slightly new meaning when it coincided with the typhoon like weather that hit Perth that day!

But did our hardy day trippers err in their resolve - not at all. With the wise words of Billy Connolly "There is no such thing as bad weather, just the wrong clothing. So, get yourselves a sexy raincoat and live a little!" And we did!!

The 90km/hr wind gusts hit us high up on the exposed heights at Walyunga Lookout. And "lookout" was used many times - "Lookout for the tree across the road! Lookout for the airborne branches heading our way! Lookout for the enormous puddle across the road!"

We donned our sexy raincoats and lived - a lot!

See inside for more details





2022/23 Committee

SUBARU 4WD CLUB OF WA INC.

PRESIDENT: David Peck 0402 177 886
president@subaru4wdclubwa.au

SECRETARY: Joy Unno 0429 473 709
secretary@subaru4wdclubwa.au

TREASURER: Rob Griffiths 0411 249933
treasurer@subaru4wdclubwa.au

EDITOR: Vanessa Carn 0412 937 712
editor@subaru4wdclubwa.au

SOCIAL ORGANISER:
Joanne Norton 0411 151 024
social@subaru4wdclubwa.au

TRIPS CO-ORDINATOR:
Adrian Longwood 0424 723 558
trips@subaru4wdclubwa.au

COMMITTEE MEMBERS:
Deborah Thyne 0420 791 762
Greg Carn 0404 704 233
Mary Roberts 0400 714 814
Ross Mead 0417 920 848
Graeme Sexton 0417 965 064

Contact 'all committee': comm@subaru4wdclubwa.au

MERCHANDISE:
Adrian Longwood 0424 723 558

WEBMASTER:
Rob Griffiths 0411 249 933
Jim Wilcox 0419 040 969

4WD ASSOC DELEGATES:
Adrian Longwood 0424 723 558
Keith Low 0407 477 980

MEMBERSHIP CO-ORDINATOR:
Graeme Sexton 0417 965 064
membership@subaru4wdclubwa.au

PROPERTY OFFICER:
Tony Richards 0414 224 734

ENVIRONMENT OFFICER:
Joy Unno 0429 473 709
environment@subaru4wdclubwa.au

SOCIAL MEDIA:
Vanessa Carn 0412 937 712
socialmedia@subaru4wdclubwa.au

Find us on Facebook & Instagram!

IF YOU ARE NOT
ALREADY A MEMBER OF
OUR FACEBOOK PAGE
WHY NOT FIND US AND
JOIN THE
CONVERSATION?

WE ARE NOW ON
INSTAGRAM TOO
WE'D LOVE YOU TO HELP
SHARE OUR STORY!
[@subaru4wdclubwa](https://www.instagram.com/subaru4wdclubwa)



CLUB MEMBER OF THE YEAR 2022 - 2023
ADRIAN LONGWOOD

LIFE MEMBERS:
FRED OFFER
KEITH ANDERSON
JONEL HOUSEHOLDER
RAY STEWART
NINA JOHNSON
PETER ANDRUSZKIW
JIM WILCOX
TONY RICHARDS
KEITH WILCOX
DAVID PECK
ROB GRIFFITHS



President's Report

David Peck

Sorry I missed getting in last months before the deadline, I did want to thank Mary, Graeme and Naomi, and Uta for stepping up and leading some trips.

The **Annual General Meeting** is coming up in November and I would like to encourage everyone to attend. I will be standing down as President and there will also be some vacancies on the committee so please consider nominating for a position.

This leads me on to a reminder that it's time to renew your membership. This can be done in person by giving it to Rob (Treasurer) or Graeme (Membership Coordinator), or a direct deposit can be made into the club's bank account. If you do it this way please put your name down as a reference so they can reconcile who has paid.

We are having the **Annual Dinner** in the city this year at the Belmont Hotel so please put your name down. We also need your nominations for the various awards. The main ones are "Club Member of the Year", "Trip Leader of the Year" and "Trip of the Year". Don't forget that we also have an almost unlimited number of "silly" awards for the worthy contenders.

You can place your votes in a number of ways. On each of the previous trip web pages there is a link to 'Nominate for award'. Or you can place your mouse over a name in the members section and a gold 'Nominate for award' star will appear which you can use. Or you can send your nominations through to Joy at secretary@subaru4wdclubwa.au. Lastly, you can fill in a paper copy and put it in the box at the general meeting.

**Cheers,
David**

DISCLAIMER

The material presented and the views expressed in this newsletter are not necessarily those held by the Subaru 4WD Club of Western Australia Inc. Although we make every effort to keep information in the newsletter accurate and non-offensive, we do not guarantee this. If you make use of the information on this site it is at your own risk. We are not liable for any incidental, special or consequential damages arising in relation to use of the material in this newsletter.

Please remember to support our Sponsors

SUBARU AUSTRALIA

SUBARU WANGARA

SUBARU OSBORNE PARK

RICHARD'S TYREPOWER

PREMIUM SUV OFF ROAD TRAINING

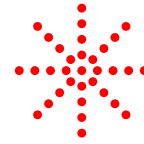
GREENSTONE



A note from the Editor

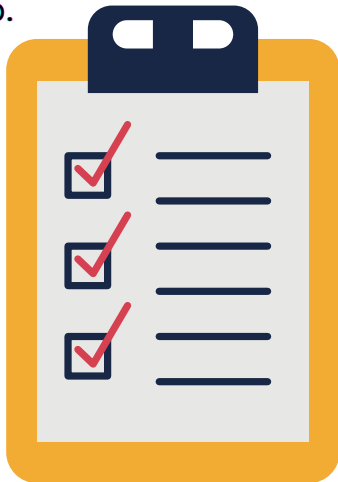
Vanessa Carn

WANTED! ASSISTANT EDITOR



Hey, you! Yes, you! Wanna dabble in some desktop publishing? We need your computer skills and a bit of your free time to become our Assistant Editor! Interested? Reach out to us at editor@subaru4wdclubwa.au and let's make some pages shine!

Trip leaders please remember to **include photos** with collated reports if you can. Send photos **as separate files**, or send a link to your cloud image storage (eg Dropbox) to share them. Do not embed them in the trip report document(s) as the image quality is reduced if you do.



Things to include with your report(s):

- Your name
- The trip name
- The date and day of the trip
- Photos - Please name & date all images

Thank you all for your help to capture and share our story!



For all your 4WD Subaru tyre and wheel needs, see our friendly sales teams at the following locations:

Belmont
9277 5418

www.belmonttyrepower.com.au

Claremont
9286 2299

www.claremonttyrepower.com.au

Osborne Park
9444 2233

www.osborneparktyrepower.com.au



Richard's Tyrepower

Osborne Park Belmont Claremont



Tyrepower

Notice of AGM

FOR THE SUBARU 4WD CLUB OF WESTERN AUSTRALIA INC.

TUESDAY 14 November 2023 in the
City of South Perth Library Mopoke Room
&
ZOOM Video Conference

AGM follows the General Meeting which starts at 7.45 pm
AGM Agenda includes: President's Annual Report, Treasurer's
Financial Statements, and Election of Office Bearers & Committee



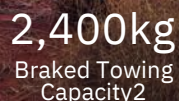
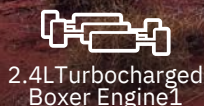
**CONSIDER NOMINATING FOR A POSITION ON THE COMMITTEE
OR NOMINATE SOMEONE ELSE WHO WOULD SUIT THE ROLE**

POSITIONS VACANT INCLUDE:

- **PRESIDENT**
- **GENERAL COMMITTEE MEMBER**

ALL-NEW SUBARU OUTBACK ALL-WHEEL DRIVE

Turbocharged



Subaru Outback AWD Touring XT

turbocharge your next adventure

With over 25 years of back-to-back innovation, Subaru's most technologically advanced SUV is set to supercharge your adventures. Introducing the all-new Subaru Outback AWD Sport XT and Outback AWD Touring XT, boasting a new 2.4-litre turbocharged horizontally-opposed Boxer engine¹. Pushing out more power and torque, the turbocharged Boxer engine boasts an impressive braked towing capacity of up to 2,400kg².

Celebrate the new towing capability, and go anywhere Symmetrical All-Wheel Drive, while curating your drive via the 11.6" touchscreen with wireless Apple CarPlay[®] and Android Auto[™] smartphone connectivity³ standard across the range. The Subaru Outback AWD Touring XT redefines comfort and luxury with Nappa leather⁴ accented seat trim. Pre-order Subaru's flagship SUV now and discover more power to explore.

Visit your local Subaru Retailer.

1. Subaru Outback AWD Sport XT and Outback AWD Touring XT feature a 2.4-litre turbocharged Boxer engine. 2. Towing capacity is subject to regulatory requirements, tow bar and vehicle design and towing equipment limitations. If the towing mass is greater than 2,000kgs, an Electric Brake Controller must be fitted and is only capable of towing a trailer with a maximum of 2 axles. Requires fitment of optional tow bar accessory. Refer to Owner's Manual for towing instructions. For further information, ask your local Subaru Retailer. 3. Compatible Apple[®] or Android[™] device required. 4. Nappa Leather seat trim only available on Subaru Outback AWD Touring XT only.



Cover Story - Lookouts, Lakes & Lunch

Day Trip - Wednesday 13 September

Hanna Silversides



Next came the 'wildflower' walk at FR Berry reserve. First, we were welcomed by a flash of lightning overhead and a loud clap of thunder. Undeterred we donned our sexy raincoats and after a quick cuppa in the excellent shelter there, we headed out for a little stroll in the horizontal rain. We couldn't actually see the wildflowers through the rain, but the waterfall was magnificent and well worth the stroll!

I then rang the Chidlow tavern and YAY they still had power, so lunch was still on! Not only that but they assured us there was a roaring fire to dry us off - such stoic bravery must be well rewarded, they said! And indeed it was. A warm welcome in a warm pub full of fascinating memorabilia from the Hills railway era and hearty food served with pleasant informality.

Not to be lulled into a comfortable afternoon nap, we headed back out into the weather (now easing) to walk round Lake Leschenaultia. But alas our final efforts of the day were thwarted by power lines down and the access road closed. So whilst some called it a day and headed home, some came back to our Raintree home for a cuppa. Oh and whilst we were negotiating our way through the storms I gave everyone a lesson on the historical significance of how railways had greatly contributed to now flourishing hills communities.

A very big thankyou to all for your positivity, for your humour and to be honest - for just turning up!! Also a welcome to new members Austen and Lyn, honestly it can only get better from here and thank you for your good grace. I loved the day.



**Cosy morning tea at the shelter
FR Berry Reserve, Gidgegannup**



Welcome, warmth & comfort of the Chidlow tavern



(Story continues over page)

“Rain drops keep falling on our travels” is how this trip began when we met our trip leaders Stephan and Hanna at the Mundaring Sculpture Park, where we bought our coffees at the well-organised coffee van. We then gathered around with the other Club members to be briefed on our trip. There were six cars in our convoy including a “Brumby Ute” driven by guests Austen and his wife Lyn. It made quite a statement amongst our Foresters and XVs!

The rain and wind were to be with us all day as we headed off through winding roads, with debris and some branches scattered over them. We were prepared for these driving conditions today.

Hanna gave us a very detailed and interesting commentary about the history of the area and the railway. She had definitely done her homework.

We stopped at the Walyunga National Park Lookout, but it was raining quite heavily by then, but I decided to quickly run to the lookout and have a look around. Couldn't see much except for low cloud and fog. We continued on past the Peter Brock Memorial and stopped for morning tea at F.R. Berry Reserve, after which we went on a short walk to the Wooroloo Brook waterfall, which was flowing fairly quickly. What a beautiful sight!

Lunch was at the historic Chidlow Tavern. It has a large display of very interesting old railway memorabilia which one could spend hours just looking around this most interesting display. Apparently, the original cellar remains beneath the main bar, but has been filled in to prevent dampness.

We were welcomed by the publican and a lovely wood fire when we arrived, as we were slightly on the damp side of things! The lunch menu has a lot to offer – I was quite surprised by the variety – and the food was yummy and catered for us all.

After lunch our intentions were to go to Lake Leschenaultia, however the road was closed due to fallen power lines. Our gracious hosts invited us back to their place, as they live close by. But weren't all able to go. So, we thanked Stephan and Hanna for a really great day and we all went our separate ways.

Naomi and Graeme Sexton

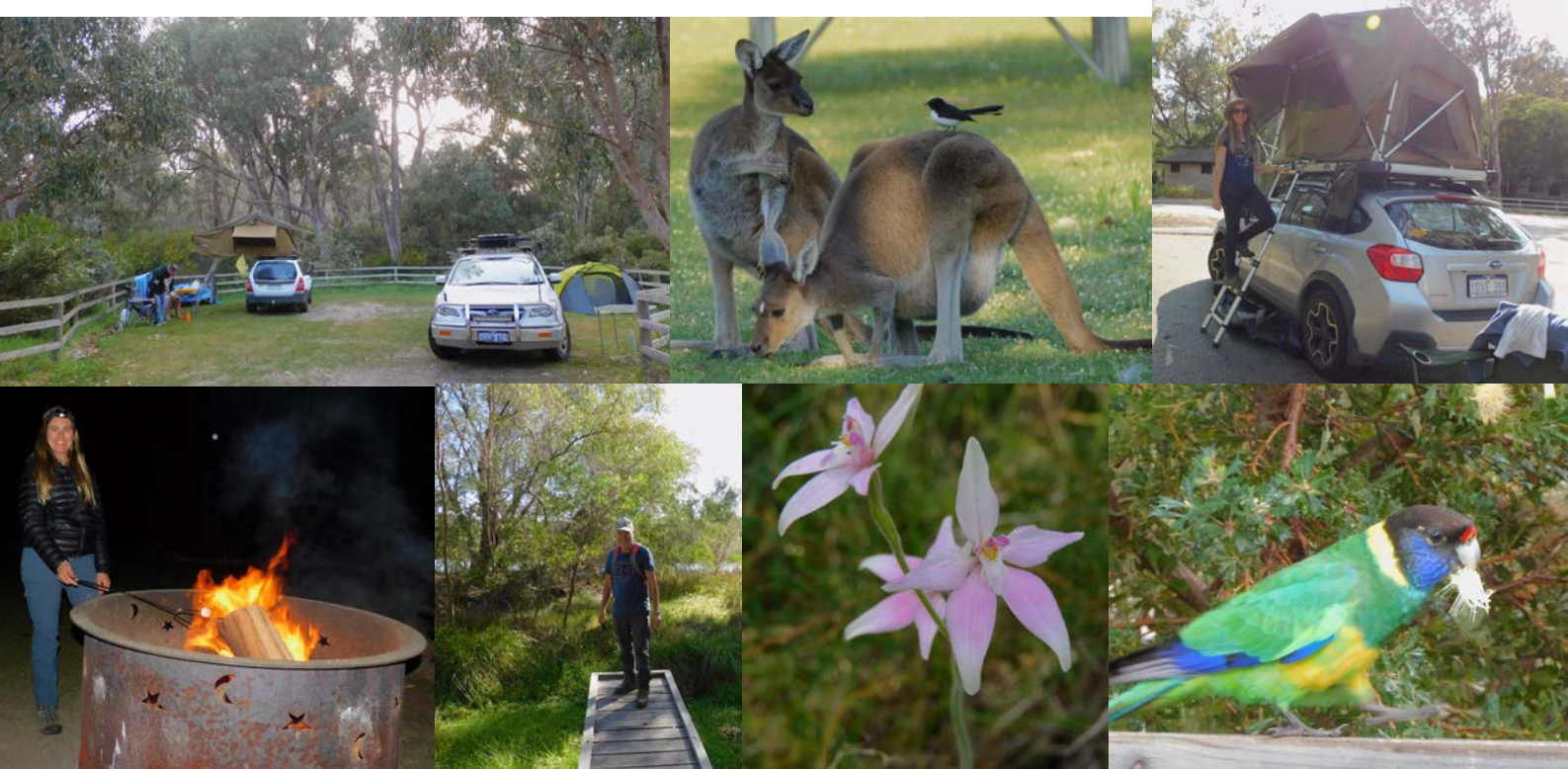


The Chidlow Tavern is just 45 kilometres east of Perth, in the rustic town of Chidlow. A great place to stop for lunch when sightseeing around the Perth Hills, Mundaring or Lake Leschenaultia.

Despite extensive internal changes to the tavern during the 1980s to add a large bar and eating area, the tavern has retained much of its bygone charm.

YANCHEP NATIONAL PARK OVERNIGHTER AND YANCHEP INN LUNCH 9-10 SEPT Joy Unno

I had never camped at the Yanchep Henry White Oval camp ground before so I was interested to do the Saturday night overnighter before the Sunday Yanchep Inn Lunch. Well, what a great camp ground! Very close to Perth but nestled in the lovely bush surrounds of Yanchep National Park, it is run by DBCA and has camp hosts, is secure (a coded drop-gate), and has big, grassed sites plus smaller tarmac sites (a former car park). There's a huge, covered camp kitchen with lots of sinks, 2 bbqs, picnic benches and more. The ablution block is modern and has flushing toilets and roomy hot showers. There were also mobs of kangaroos, ducks and parrots on the grass of the oval. Nick & I did the Wetland Trail around the Loch McNess and Rochelle did the long inland wildflower walks. Neil, Emmie, and the girls visited the koalas.



Sunday Lunch at the Yanchep Inn went well with 25 people arriving for a gnoosh-up and chat. We were seated at two tables in the atrium area which had giant windows looking out onto the park. The food was hearty, I had the Sunday Roast, and the service was very good. It was great to catch up with people and have a natter in relaxed surroundings.

Rob Griffiths surprised us with a gift of pencils complete with Subaru Gnomie toppers produced on Rob's 3 D printer. So clever! People went off and did the wildflower walks after lunch. A good day for all (although Graeme did get a tick!).





8T WINCH RING
CLEARANCE \$50.00

- 100mmØ LIGHTWEIGHT ALLOY [0.4KG]
- SERIES 1 - FLAT SIDES
- SUITS 8-14mm DYNEEMA WINCH ROPE
- SILVER AVAILABLE ONLY
- MADE FOR SOFT SHACKLES ONLY



11T WINCH RING
\$99.00

- 100mmØ LIGHTWEIGHT ALLOY [0.4KG]
- SERIES 2 - CURVED SIDES
- SUITS 8-14mm DYNEEMA WINCH ROPE
- SILVER OR RED AVAILABLE
- MADE FOR SOFT SHACKLES ONLY



15T WINCH RING
\$119.00

- 125mmØ LIGHTWEIGHT ALLOY [0.73KG]
- SERIES 2 - CURVED SIDES
- SUITS 8-16mm DYNEEMA WINCH ROPE
- SILVER OR RED AVAILABLE
- MADE FOR SOFT SHACKLES ONLY



G-LINK WINCH HOOK
\$189.00

- 32Ø CURVED HOLE & 15000KG MBS
- FITS SOFT SHACKLES & 4.7T SHACKLE
- RUBBER SIDES. FOLDS FLAT.
- EASY GRIP & ROUNDED EDGES



5M 9.5T EXTENSION
\$72.00

- 10mmØ LIGHTWEIGHT DYNEEMA
- RE-INFORCED ENDS
- 9500KG MBS



10M 9.5T EXTENSION
\$99.00

- 10mmØ LIGHTWEIGHT DYNEEMA
- RE-INFORCED ENDS
- 9500KG MBS



20M 9.5T EXTENSION
\$169.00

- 10mmØ LIGHTWEIGHT DYNEEMA
- RE-INFORCED ENDS
- 9500KG MBS
- UPTO 50M AVAILABLE (\$399.00)



10M 11T EXTENSION
\$99.00

- 11mmØ LIGHTWEIGHT DYNEEMA
- RE-INFORCED ENDS
- 11000KG MBS



20M 11T EXTENSION
\$199.00

- 11mmØ LIGHTWEIGHT DYNEEMA
- RE-INFORCED ENDS
- 11000KG MBS
- UPTO 50M AVAILABLE (\$399.00)

www.psot.com.au | 0424723558 | Perth, WA

Premium SUV Offroad Training



Specialist SUV Off
Road Driver Training
Courses & Products

**BOOK
ONLINE**



**Premium SUV
Off Road Training**

www.psot.com.au

\$199 - Introductory Beach Sand Course

\$250 - Intermediate Bush and Sand Course

Subaru 4WD Club Members receive \$20 discount on all courses. enter "SUB4WDWA" when booking



Stockist of Bushranger 4WD Gear

10% off all items in stock.

Air Compressors, Tyre Gauges &
Recovery Gear

HEARTBEAT 45+ CPR & FIRST AID REFRESHER COURSE

A keen group of Subaru members turned up to the Royal Life Saving Society WA (RLSSWA) in Mount Claremont, on a Saturday morning for the Heartbeat 45 + CPR & First Aid Refresher Course. This non-certificate course was funded by a grant from the WA Department of Health. We were lucky to get the best trainer ever in Cathie, who had done 15 years in Search and Rescue as well as many years with RLSSWA. She was a font of First Aid knowledge and useful tips, with lots of interesting stories to tell. To top it all off, she was a fellow 4WDriver having just returned from a family trip on the Gibb River Road.

Cathie started with the DRSABCD, turning it into DRSSABCD by adding an extra S -Senses.

Use your senses to observe the patient closely to get a clue as to what's going on with them. Look at them, are they hunched over protecting a possibly injured body part, do they look pale and sweaty. Listen to them, they may be confused, indicating a head injury, or their breathing doesn't sound normal. Smell them, diabetics have acetone-smelling breath if their blood sugar levels are excessively high. Touch them, cold skin can indicate they are going into shock.



Checking the Snakebite



Transporting the Patient

Cathie got us going with the CPR mannequins and the Automatic External Defibrillators. First, she showed us a 2D model of the head and throat. If we tilt the head back and push the jaw down for CPR, this opens up the throat and any foreign objects inside the mouth fall into the windpipe and the patient chokes.

So, clearing the mouth first is a must.

We worked in pairs or trios and that was an interesting exercise in teamwork. All of us had done First Aid before so we managed to synchronise our actions and save the plastic patient.

Cathie was able to customise the course to suit our 4WD situations so she talked about what to do in remote locations for burns (wrap on gladwrap to keep clean, cool with wet tea towels), bites and stings (hot water for anything with spines, ice for spider/bee/centipede /scorpion bites and non-tropical jellyfish), and choking (not the Heimlich Manoeuvre, as this done wrong can paralyse the diaphragm).

[\(Story continues over page\)](#)

If you don't have a lot of bandages, pack deep artery wounds with white pepper (an anti-coagulant) or white sugar (antibacterial) and apply direct pressure. If direct pressure on a limb artery bleed fails, use triangular bandages, belts, straps, etc., as a tourniquet.

Hint: Have lots of extra triangular bandages in your First Aid Kit. Also, carry Aspirin 300mg for possible strokes and keep old defib pads to remove hair.

We then got to bandage our own head wounds, make Clove Hitches for bandaging impaled objects in our legs, pads for eye wounds, and used the correct technique to inject ourselves with EpiPens (not ones with needles or adrenaline).



The pièce de résistance of the day was the snake bite on the foot demonstration with Uta as the willing victim. Cathie showed how to immobilise the leg with splints before trussing up Uta's leg from the foot to the hip like an odd-shaped Xmas present. There was the big reveal of the clever trick for leaving a corner of the first wrap of the bandage poking out over the bite site. It marks the location of the bite and you just have to pull that corner aside to see the bite. But wait there's more! Cathie showed us how to use a blanket (it could be tarps, sleeping bags, towels, etc.) to port the patient to a vehicle to get them to medical help. Fortunately, the 6 people holding up Uta in a blanket didn't have to walk down a rocky gorge or anything, they just lifted her a bit to prove the concept.

Many thanks to Cathie, we all came away from the course having learnt a lot and with a bit more confidence in our first aid and CPR skills if we had to use them in future.

Joy Unno



Going the Granite Way or: A Double Dash of Davids

Day One - 12 August 2023

Tom Minto

Up until a few days beforehand there were only three participants (Ross as Trip Leader, Rochelle and me). However, we started with five vehicles as David and Rhys nominated for the trip near the start date. In response, Ross accidentally emailed David and Bronwyn. Each of the latter two initially wondered if the other had signed up for the trip without discussing it. They did clarify that point between them. Fortunately, David and Bronwyn were able to join the trip for the day only.

The briefing and sign-ons were efficiently completed with Ross noting the trip was expected to be a low key affair with nothing more challenging than dirt roads and tracks.



First stop was **York** where we variously chased up coffee and/or hot foods.

There was nominally a market taking place but the number of stalls was small.



Coffee Stop

York Shopping

We made our way onto the Goldfields Rd till we got to the ruins of the Youndegin Police Outpost which was originally built in 1865. With the discovery of the Yilgarn Goldfields in the 1880's, the premises were set up as the Youndegin Arms Inn for travellers. The building later became a staging post for Cobb and Co coaches but declined with the nearby construction of the Eastern railway in the 1890's. As with many of these old Colonial structures, the low veranda's produced a degree of unplanned head banging.



Hunts Well Tammin

Next point of call was **Hunt's Well** near Tammin. This spot had basic shelter and tables adjacent to a low granite rock. The well itself was securely fenced off but the water level was clearly visible less than two metres from the surface. Explorer Charles Hunt first passed through the area in 1864 during his first expedition east of York. He drew upon this well as an indigenous water source. In 1865, during his third expedition, a construction party stoned up this well. We lunched at Hunt's Well then followed various dirt roads which were part of the Granite Way.

We stopped at an information bay at Mt Caroline. From here, we had an excellent view of Mt. Stirling to the south. This is quite a sizeable granite outcrop. The information board here provided material about rare and threatened Black Flanked Rock Wallabies which was both informative and interesting. A further km or so took us to the car park for the Mount Stirling Nature Reserve.

[\(Story continues over page\)](#)



Looking toward Mt Stirling

Mt Stirling View

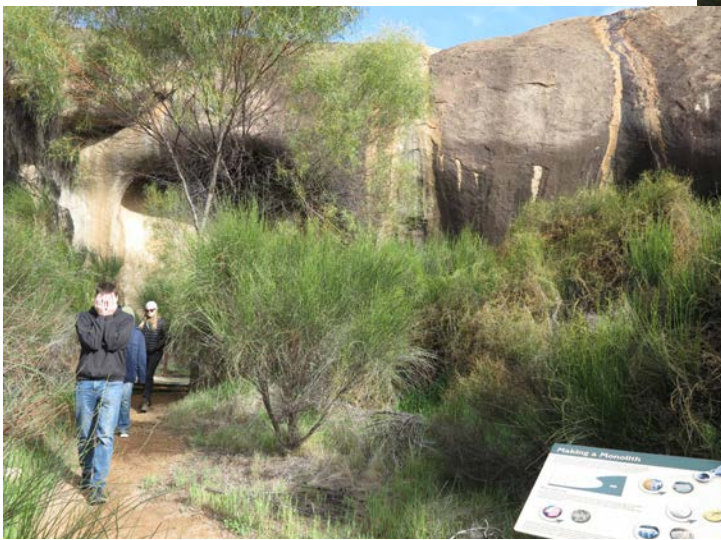
The group took the opportunity to climb sections of the Mount. As well as being large and steep, the terrain was covered with lots of fallen timbers. This wouldn't faze a Rock Wallaby but none of our group made it to the peak.

A further 16 or so km took us to **Kokerbin Rock**. This is amongst the world's largest monoliths as in a geographical feature comprising a single massive rock. We all spread out to explore but could only cover a certain amount in order to get back to the car park by the nominated time.

The mosquitoes were very noticeable at Kokerbin. There were lots of them and they seemed much bigger than standard issue mosquitoes. The signs at Kokerbin Rock also seemed to have some inconsistencies. Some said camping was prohibited and some that it was discouraged. Either way the intent was that visitors should use the Kwolyin camp area. This was around 8km away and had been constructed as part of the "Royalties for Regions" programme. This was all good as Kwolyin was our planned campsite for the night.



Kokerbin Rock



We arrived at **Kwolyin** with plenty of daylight to set up camp. This is a free campsite administered by the local Shire. Facilities were excellent with a camp kitchen with a gas cooktop plus various tables and bench seating. Flushing toilets added to the appeal. The site is very spacious and may be used for a maximum of 72 hours. Information boards covered past history of the site including the fact that it had a pub but no water whereas the nearby town of Shackleton had water but no pub.

No firewood may be gathered on site. A number of our group bought firewood with them, so we were able to enjoy the traditional nibbles and drinks around the fire.

Total distance travelled from the meeting point was around 225km. David and Bronwyn stayed for a while helping others set up and checking out camping gear before setting off for a 3 hr trip home.

After tea, we sat around the campfire swapping stories and admiring the clear, still, crisp evening until our respective sleeping bags beckoned.

Day Two- 13 August 2023 David & Rhys Sarolea

The slight breeze dropped off to a still, clear night, great for sitting around a campfire but unfortunately had us awaking to fog and dew. The two roof top tents of Rochelle and Rhys and ground tents were packed away wet. We were hoping that the relaxing start of the morning the tents would have had an opportunity to dry out – Never mind, a job for the afternoon at home we all thought.



Yet to pull out on to the road from the Kwolyin campsite Rhys and I radioed thinking we had forgotten the hammer so returned the 200 metres – the hammer had been packed away.

Note to self – always completed a final campsite check.

The usually friendly banter over the radio discussing cruise control through what seemed thickening fog. It often looked like rain being so dense.

Heading towards Quairading, we drove past the small town of Pantapin. The town originated as a railway siding that was planned in 1912 as part of the Quairading to Bruce Rock line. The town was initially named Ulakain, after a nearby well, and was gazetted under that name in 1914.

Next was Yoting. Don't blink or you will miss it. A small town located between Quairading and Bruce Rock which was originally a station on the Quairading to Bruce Rock railway line when it was established in 1912. Now, like so many other wheatbelt towns, there are only some grain silos left to mark the spot.

[\(Story continues over page\)](#)

Ross explained the Sandalwood plantation as we past the linear hillside trees. Searching details using Google confirmed that the two main varieties are *Santalum spicatum* (Australian sandalwood) and *Santalum album* (Indian sandalwood).

Australian sandalwood is a valuable hardwood native to Western Australia prized internationally for its aromatic and medicinal qualities. Australian Sandalwood Oil currently sells for around US\$1,500 per kg and Indian Sandalwood Oil currently sells for around US\$2,500 per kg with the price primarily driven by the alpha santalol content. Increasing demand for this valuable timber has rapidly depleted wild resources resulting in the establishment of a sustainable plantation industry, particularly around Kununurra. 25 known species occur across Australasia, Indomalaya and Oceania ecozones. Australian sandalwood currently supplies well over half of all sandalwood traded around the globe annually.

Arrived in Quairading (Established 1907) at 1015 hrs, with the roof top tent laden car drivers deciding to top-up with fuel. The BP Road-House was a busy place. As we refuelled, the Esperance TRANSWA bus arrived with its passengers hungry for truck stop food. Paying for the \$1.94/ L unleaded took longer than usual with the long queue (line as they say in America) of people waiting for food.



We didn't go to Toapin Weir which is eight kilometres north (and slightly west) of the Quairading town site. According to the Shire Tourist information, it has toilet facilities, electric barbeques and shade. It is also a quiet-free overnight camping spot with good skies for star gazing. This might be a good campsite for a future trip.

Then past Dangin. Dangin is named after the nearby Dangin Spring, which is in turn thought to be an Aboriginal place name meaning "place where the Djanja grows" – Djanja being a species of *Hakea* that grows in the area.

Next was Mawson (22 km west of Quairading) where the convoy turned left onto the Beverly Road. The farms in this area were looking spectacular with large parts of the countryside swathed in the bright yellow flowers of Canola crops. We had to stop and take some photos. Unfortunately, the sun did not oblige us with some brightness. Instead, we had a small rain shower just before we reached Beverley – First rain of the weekend – Great weather planning Ross.



Fortunately, the Red Vault Café was open in Beverly so we took the opportunity to stop for a coffee and toilet break. There was a small group of motor bike riders out for their weekend country ride and coffee stop also at the Café. Rochelle took the opportunity to check out the local art gallery and shop while we were there. Our timing was good because just as the coffee was served, a large group of people appeared around the corner heading for coffee. It appears they were a group of Kia Stinger car enthusiasts also out for their weekend country drive and coffee stop.

From Beverly, the plan was to take the Talbot West Rd back to the Great Southern Hwy. This would provide an opportunity to appreciate the Wandoo National Park. Care was needed along Talbot West Road west road as there were a number of motor cycles heading inland towards Beverly. It pays to be wary of the oncoming motorcycles on corners as they may drift onto the opposite side of the road.

To better enjoy the Wandoo National Park and to get some gravel road driving, we turned left onto Deefor Road. The wandoo forest was beautiful with granite outcrops adding character. We enjoyed a relaxing lunch at one of these outcrops with the scenic natural landscape plus the sights and sounds of the forest. Unfortunately, you could see indications of spinning tyre marks from an inconsiderate vehicle having driven on the moss area of the flat rocks.

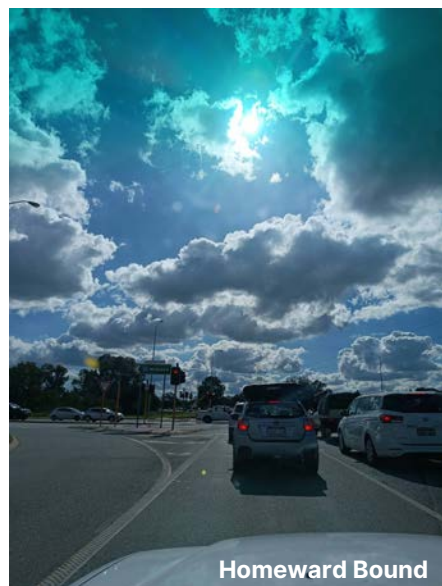
Discussions over lunch expanded on Personal Location Beacons learnings from the last club meeting in South Perth.

After lunch, we headed via Kent's Road back to the black top on the Talbot West Road. From here, it was out to the Gt Southern Hwy via Yarra Rd then left on the Great Southern highway before turning left again at the Lakes Roadhouse onto the Gt Eastern Hwy.

The formal part of the trip ended at the Mundaring traffic lights. We all said our goodbyes, thanking Tom for Tail end Charlie duties. Ross turned left to take the back roads to his home whilst ourselves, Tom and Rochelle continued heading west down the highway.

Rhys and I managed to get home at about 2pm. Unpack and put the roof top tent up to dry out, ready for next camping trip was our first priority.

A stress-free weekend away, fantastic to go with the flow and have no set timetable - Very Freeing.



Purchase a new Subaru from Subaru Wangara and receive a

\$500 **Genuine Subaru**
voucher for accessories*



exclusive Subaru 4WD Club of WA members offer



Contact a Sales Consultant for more information
(08) 9309 7888

At Subaru Wangara we are proud to stock one of Perth's largest ranges of new Subaru models. So come down and speak to our team to redeem our exclusive Subaru 4WD Club of WA members offer.

new@subaruwangara.com.au
subaruwangara.com.au

  @SubaruWangara

At Subaru Wangara we are here to help and we pride ourselves on putting you, our customer, first.

10 Berriman Drive, Wangara | Call us today on (08) 9309 7888
DL17103 - MRB 1854

Subaru
Wangara



Terms and conditions apply. This ad must be mentioned when purchasing a new Subaru at Subaru Wangara. Offer is not transferrable or redeemable for cash. Offers only valid until 31st December 2023. See instore for full terms and conditions.

STRAIGHT TO THE PENINSULAR

22-07-23 TO 02-08-23 JOY UNNO

We left rainy Perth, heading east in a convoy of two cars. Jo & Stu in Oscar the Outback and Joy in the XV. I've never been one to give a name to cars and XV is pretty challenging. "X-ray Vision" ? "Xylophone Volunteers"? "The XV" is enough for me. One of our stops was at the Boorabbin Memorial for the three truckies killed in the 2007 fire. I'd stopped at the loo before but didn't realise there was an actual memorial stone further back in the trees. Our camp for the night after about 585 km of travel was the Lake Douglas Recreation Reserve, 10 km SW of Kalgoorlie. A free camp, it had a long drop, picnic benches, hard gravel surface, not much shelter, and for the night we were there, loud revving hoons throughout the night.



Jo said it had been quiet when she last camped there. After waking to an icy morning, we went on to Kalgoorlie and stopped at the Boulder Super Pit as Stu had never seen it. He was suitably impressed. After fuelling up at Norseman, it was on to Balladonia for a look at the Museum (including the Skylab relic). Then across the 90 mile straight to Caiguna where we camped for the night. Next morning, Jo suggested we try the track down to the cliffs.



Well, that was quite the adventure! It didn't look far on the map, about 25-30 km, but the track was rough, slow going over limestone rocks. We were looking for the Baxter Memorial but got to the cliffs without seeing it. Baxter was one of Eyre's exploration mates. The signage on the track was not great. It was worth the bumpy drive, however, to see the magnificent cliffs, just spectacular! Stu found a track along the cliff going east so we followed that, passing a series of open spots that had obviously been used for cliff-top camp sites. The going was very rough and slow over limestone rocks and low scrubby vegetation and we became a bit concerned about staking the tyres.



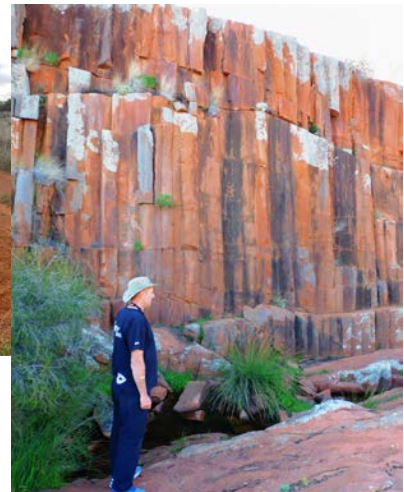
Eventually, the cliff track disappeared altogether and we turned back. As it was late by then, we camped at a suitable spot off the track to Caiguna. Imagine our surprise when Stu came back from a walk into the bush and said that he had found Baxter's memorial. Sure enough, behind some bushes at our camp site, there was a big open space containing Baxter's monument.

STRAIGHT TO THE PENINSULAR

22-07-23 TO 02-08-23 JOY UNNO



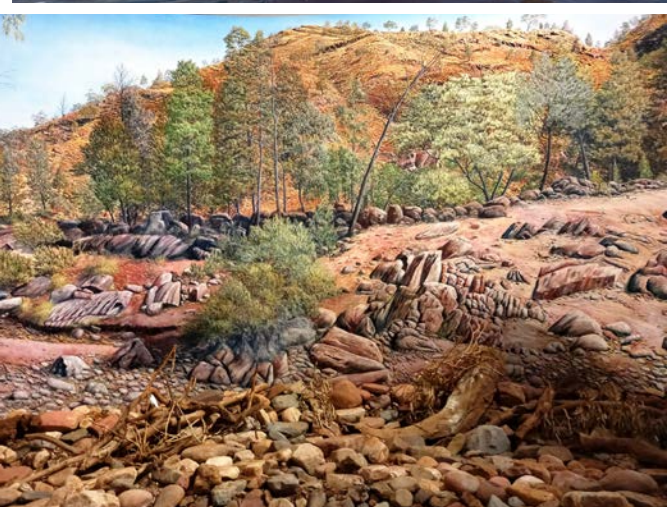
Back on the Eyre Highway, we continued on, camping at Eucla (windy) and visiting the Old Telegraph Station (sandy). The next morning we had a photo op at the WA/SA border, and a quick visit to the Head of the Bight Whale Watching (saw 5 whales, majestic creatures), before arriving at the Ceduna Caravan Park. Next day it was off to the Gawler Ranges with a stop at Pildappa Rock – the SA version of Wave Rock in WA. Arriving in the Gawler Ranges, it was a bit overcast so we didn't get the bright red colours in the hexagonal, columnar rocks at the Organ Pipes location. We did see a Yellow-footed Wallaby, courtesy of a passing hiker who pointed it out. Also, tons of emus (and emu chicks, so cute!), kangaroos, goats, and giant wombat holes. Alas, we never did spot a live wombat which Jo really wanted to see. Visited the Old Paney Homestead where Stu forgot his water bottle.



Camping overnight at Kolay Hut (a top spot right next to a spectacular rocky hill), we walked up to the Mirica Falls next morning, very pretty, with more amazing, columnar, rhyolite rocks. After a side trip to retrieve Stu's water bottle (you thought we had forgotten about that, didn't you!), we drove out of the Ranges and up to Mt Ive Station. They have a great set-up for campers and caravaners and we were greeted by Roxy, the local, very friendly kangaroo. Mt Ive had a tour where you can visit their version of the Organ Pipes and also, the huge Lake Gairdner, where Rosco McGlashan set the Australian land speed record at 500 mph (802.6 km/h), on the 27 March 1994. No land speed records this time as the lake was full of water, causing Jo and Stu to wade out and have a paddle.



Bidding Mt Ive and Roxy goodbye, we drove down south to Kimba where we found a laundromat to do the washing, saw the giant Pink Galah, lovely silo art, the metal sculptures of Eyre and his tracker Wylie, and had dinner at the pub. The following morning we headed for Port Augusta before travelling up to Rawnsley Station in the southern Flinders Ranges.



On the way we stopped at the small town of Hawker and visited the Geoff Morgan Art Gallery. This was one of the high points of the trip, to walk through the rooms of the gallery where Geoff had painted different scenes of the Flinders Ranges in giant, beautiful murals on the walls. Rocks, bushes & taxidermied animals & birds had been added in front of the painting to create an amazingly life-like diorama.

STRAIGHT TO THE PENINSULAR

22-07-23 TO 02-08-23 JOY UNNO

Rawnsley Park Station had the best enclosed camp kitchen and we had campsites with spectacular views of Rawnsley Bluff. It was a good base to explore Wilpena Pound which we did the following day. We tackled the Wangara Lookout Walk, past the old Hills Homestead and the Adnyamathanha sculpture. There were panoramic views from the lookout and you could clearly see the Pound – a bowl like structure enclosed by the Ranges, a geological formation, that is not a crater.



After the walk, I had a mission to complete. In 2018 there was a trip to the Flinders Ranges where we didn't find the most recently instated Golden Spike, a brass geological marker in the rocks for the Ediacaran Period in Brachina Gorge. This time I was determined to find it. Imagine my surprise when we got to Brachina Gorge and there were giant signs saying "Golden Spike" with arrows pointing the way. There was even a car park with informational signage, none of which was there in 2018. So we got to see (and photograph) the Golden Spike, mission complete!



The next stop in our SA adventure was Spear Creek Sheep Station, 25 km south-east of Port Augusta. We passed a big wind farm on the way in, which as future events showed, we should have paid more attention to. Our day trip out from the Station was to visit Alligator Gorge on Mt Remarkable. The drive up the 960 m high Mt Remarkable was a bit scary as it was a long way down if you fell off the edge of the road. The view of the surrounding landscape was spectacular, though. Arriving at the top safely, we then walked down into Alligator Gorge, a narrow crevasse with pretty red rock walls dotted with greenery. Certainly nowhere as huge and impressive as Dales Gorge at Karajini, but it was picturesque and well-liked by the locals.

Back at Spear Creek, we had retired to the tents for the night when a huge wind blew up (remember the wind farm – there's a lesson here). Jo's tent door got mashed flat and she had to be rescued by Stu in the morning. We packed up, vowing never to camp upwind of wind farms, and said our goodbyes for the time being. Stu & Jo were heading off to Cooper Pedy for a couple of days while I was going down the east side of Eyre Peninsula to visit my family in Port Lincoln. On the way through Port August, I stopped to visit the Arid Lands Botanical Gardens. With its array of desert-tolerant plants (lots of Eremophila), many of which were in flower, plus the very nice café, it is a great place to visit. Then it was down the east side of the Peninsula through all the coastal towns, each of which has its own attractions. There's cuttlefish at Whyalla, silo art at Cowell and Tumby Bay, many quaint town cafes, plus beautiful beaches and coastline. The agricultural district of Lower Eyre Peninsular was decorated with wide fields of glowing, golden canola crops. Port Lincoln is the biggest town and very scenic with its spectacular granite and limestone coastline, deep harbour, and islands off-shore. Thanks, Jo for suggesting and planning this trip and thanks Stu for being a great trip companion. We saw some amazing places and sights and had a wonderful, fun, and memorable time!

SUBARU 4WD CLUB OF W.A. INC.

CLUB MERCHANDISE – buy items at meetings



Bisley khaki 100% cotton long sleeve shirts (Mens and Women's sizes) are available at a subsidised cost of \$40 with logo (but no name) and \$45 with logo and name.

If you buy a shirt from Club stock with no name, you can have your name added later by taking the shirt to Hip Pocket in Balcatta and having it embroidered (on the spot if you ring first) at a cost of \$9.



Royal blue & white ("Contrast") polyester/cotton polo shirts (with pocket) are available at a subsidised cost of \$15



JBsWear Full Zip Polar Jackets (in Mens and Women's sizes) with logo (to be added) are available for \$36.

Details: 100% polyester for durability; 290gsm low pill polar fleece; 2 front pockets; and adjustable elastic hem with toggles.



Cap – royal blue and white. Logo to be added. Cost tba



History Books – reduced to \$10



Royal blue and white ("Podium Bold") 100% polyester polo shirts (with pocket) are available at a subsidised cost of \$15.



Club stickers \$3



Embroidered Badges \$5



Navy blue beanies – \$9

The supplier of all Club clothing items is Hip Pocket Workwear & Safety, Balcatta.



Flat pack neoprene can coolers – \$5

Trips & Socials

Please refer to the club website for all dates & details



<https://www.subaru4wdclubwa.au/>

UHF radios are required for all club trips. They can be hired from the club by indicating on the website when you put your name down for a trip or by contacting trips co-ordinator Adrian on 0424 723 558 or email trips@subaru4wdclubwa.au

OCTOBER 2023

COCKTAILS & JAFFLES WITH THE LANDCRUISER CLUB

06 - 08 OCTOBER

WANDOO CLEAN-UP DAY & OVERNIGHT CAMP

07 - 08 OCTOBER



LAKE LESCHENAULTIA LOLLING

15 OCTOBER



KAARAKIN KLEAN-UP MORNING

22 OCTOBER

ANNUAL DINNER & AWARDS

28 OCTOBER

NOVEMBER 2023

PERTH 4WD SHOW

10 - 12 NOVEMBER

ANNUAL GENERAL MEETING

14 November

PRESTON BEACH

26 NOVEMBER

DECEMBER 2023

CLUB CHRISTMAS PARTY

02 DECEMBER



JANUARY 2024

LEDGE & LANCELIN BEACH

14 JANUARY

JANUARY 2024

LEDGE & LANCELIN BEACH

14 JANUARY

SUN, SURF, SAND, ESPERANCE

26 JANUARY- 3 FEBRUARY

EXTENDED LWE

JANUARY 2024

LEDGE & LANCELIN BEACH

14 JANUARY

SEPTEMBER 2024

QUAALUP QUEST - THE SEQUEL

21 - 23 SEPTEMBER LWE

Ready to lead your own adventure? Don't fret, you've got this! Mary, Naomi, and Graeme have already blazed the trail and so can you. Plus, we're here to lend a helping hand!



The Club is running trips for members in accordance with the latest advice issued by the WA State Government COVID-19 Guidelines.

Subaru 4WD Club of WA Member's offers

10% off

your next service*



exclusive
to
Subaru
Osborne Park

free

window tint*

with any new purchase



At Subaru Osborne Park we are here to help and we pride ourselves on putting you our customer, first.

435 Scarborough Beach Rd, Osborne Park WA 6017 | Call us today on 08 9273 2777

License Number DL17103.

Subaru
Osborne Park



*This ad must be presented at the time of service booking to receive the 10% discount & free window tint offer. Free window tint only available with new purchases. Offers only valid until 31st December 2023. May not be used in conjunction with any other discounts or offers.

TRIP PROMOS

COCKTAILS & JAFFLES WITH THE LANDCRUISER CLUB

06 - 08 OCTOBER



It's on again. Lets see if we can make at least one team of Subaru Club to compete in the Cocktails and Jaffles event with the Toyota Landcruiser Club!

The theme is Steam Punk and there will be prizes

There will be driving on Saturday and Sunday. Check with Jo for more details and join on the Club website.

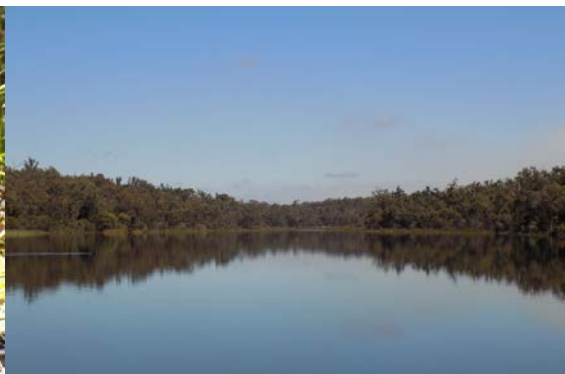
WANDOO CLEAN UP DAY 7 OCT



Come and help Track Care clean up rubbish in Wandoo National Park. The Club does annual trips to the Park so it is good to contribute some time and effort to keep it looking beautiful. As an added bonus, the wildflowers are spectacular at the moment! There is an option to camp overnight or just come for the day. Contact David Peck or join on the website.

LAKE LESCHENAULTIA LOLLING 15 OCT PICNIC DAY TRIP

Last month we had a wildflower walk in the Northern suburbs (Bold Park). Now we are going South (East) to lovely Lake Leschenaultia where we will have a short wildflower walk around the Lake. But there is so much more to do: picnic or bbq or kiosk lunch, swimming (if it's hot), canoeing or SUPing (bring your own or hire one), or just lolling by the lakeside. Join the trip on the website. Joy Unno



KAARAKIN CLEAN UP DAY 22 OCT

Come out for a Sunday morning drive to Kaarakin Black Cockatoo Sanctuary and help clean up the WA 4WD Association Meeting Room and the area around the building.

It's a good chance to meet people from other Clubs and have a chat. This time it is the Foothills 4WD Club leading the clean-up and providing Morning Tea!

Join the trip on the website.



TRIP PROMOS

ANNUAL DINNER & AWARDS

28 October 2023

This years Annual Dinner will be held at the BELMONT TAVERN.

Join us for a fun social evening with presentation of ANNUAL AWARDS.

Dinner seating will be from 6pm with a 3 course meal to be served.

Make your FOOD selections on the Club website.



**DINNER CUT-OFF DATE
IS 16-10-23
DON'T MISS OUT!**

ANNUAL DINNER AWARDS CUT-OFF DATE WEDNESDAY 18 OCTOBER

What Are the Award Categories?

1. Club Member of the Year
2. Trip of the Year
3. Trip Leader of the Year
4. Social Trip of the Year
5. Social Trip Leader of the Year
6. Other or Silly Awards

VOTE

What is the judging criteria, you may ask?

Club Member of the year is awarded to a person who has made a notable contribution to the Club's activities during the year, e.g. served on the Committee or other position, been Trip Leader for lots of trips, arranged events, etc. Or it could be a newish member who has stepped up and been very active in the Club.

Trip or Social Trip of the Year is the trip (or social) that most members vote for as being the best trip. You don't even have to have gone on the trip to vote for it if you think it is a great trip. Same with the Trip or Social Trip Leader of the year, whoever you think did a fantastic job of it.

Other or Silly Awards are given for positive, silly, funny or weird things people do on trips. The funnier or more heart-warming the better. **SO START VOTING NOW**

How To Vote

At the bottom of every Trip Page on the Club website there is a **Nominate For An Award** button. click on that to nominate either the trip or the trip leader. If you log into the Members section on the website, to the right of each member's name is a small blue trophy icon. 🏆 Click on that to vote.

Or email the Secretary with your vote. The Secretary is the one who tallies the votes and all votes are anonymous to other members.

MEMBERSHIP RENEWAL

Graeme Sexton



Hi All



I hope you have enjoyed your membership of the Subaru 4WD Club of WA during 2023. There has certainly been a lot on!

Annual membership of the Club commences on the 1st October each year and runs through until the 30th September the following year. To remain a member, club fees are required to be paid by no later than 30th December each year.

If you wish to continue as a member of the Subaru 4WD Club of WA, please now forward your membership fee for 2024 to the Club's Treasurer as detailed below. Please note that if you are a new member having joined the Club since 1st July 2023, your membership has been extended to include the 2024 Club year. If you are a Life Member of the Subaru 4WD Club of WA, thank you for your service, you are exempt from membership fees.

Annual fees are:

Metro member - \$50

Country member (including the City of Mandurah) - \$40

Social member (Only able to attend meetings and social events) -\$40.

Life member – Free.

Fees can be paid by direct debit to the Club's bank account.

Details are:

Account name – Subaru 4WD Club of WA.

BSB – 036078 (Westpac)

Account Number – 289726.

Be sure to include your name with any payment.

I look forward to seeing you at club events for the remainder of 2023 and in 2024. Please contact me if you have any questions about your membership.

Regards

Graeme Sexton

Membership Coordinator

Email: membership@subaru4wdclubwa.au

Phone: 0407 999 268



Greenstone

Accounting & Business Services

You love exploring and so do we. We're named after New Zealand's wild **Greenstone River.**

With over **15 years experience** in small business and personal tax and accounting, we save you time and money, so you can enjoy more of the great outdoors.

Book a phone appointment or meet in-person at our Inglewood office.

Get In Touch

0419 147 650 / tom@greenstoneaccounting.com.au / www.greenstoneaccounting.com.au

Business Tax Advice / Start Up Businesses / Business Structure Advice / Income Tax Return Preparation / Financial Statements / BAS Preparation / Bookkeeping