



## EXCITING ECLIPSE EXPERIENCE!

### QUOBBA STATION ASTRONOMY ADVENTURE 16 -22 APRIL

Eclipse Day was a success with the group watching the eclipse projected onto a screen from Joy's telescope and using solar glasses for direct viewing. Gus had his telescope set up for time lapse photography of the eclipse.

Mary & Jasmine provided a Spotify soundtrack of sun, moon & star related songs to add to the atmosphere. Guy provided champagne to celebrate a successful viewing when the maximum eclipse was achieved.

People made weird alien shadows with their hands, it got slightly darker and noticeably cooler, Venus was suddenly visible as a bright spot in the sky, the birds made a fuss, and the flies disappeared briefly.

Everyone wants to go to the 2028 solar eclipse now.  
**LOOK FOR THE FULL REPORT IN THE JUNE MAGAZINE**

MAY 2023

## This issue:

FAREWELL KARL

CAMP OVEN COOKING &  
CAMPING DEMO

DAY TRIP TO  
DWELLINGUP

UPCOMING TRIPS  
& MORE!

PEAK CHARLES





## 2021/22 Committee

### SUBARU 4WD CLUB OF WA INC.

**PRESIDENT:** David Peck 0402 177 886  
president@subaru4wdclubwa.au

**SECRETARY:** Joy Unno 0429 473 709  
secretary@subaru4wdclubwa.au

**TREASURER:** Adrian Longwood (Acting)  
treasurer@subaru4wdclubwa.au

**EDITOR:** Vanessa Carn 0412 937 712  
editor@subaru4wdclubwa.au

**SOCIAL ORGANISER:**

Joanne Norton 0411 151 024  
social@subaru4wdclubwa.au

**TRIPS CO-ORDINATOR:**

Adrian Longwood 0424 723 558  
trips@subaru4wdclubwa.au

**COMMITTEE MEMBERS:**

Deborah Thyne 0420 791 762, Greg Carn 0404 704 233,  
Mary Roberts 0400 714 814, Ross Mead 0417 920 848,  
Graeme Sexton 0417 965 064

**Contact 'all committee':** [comm@subaru4wdclubwa.au](mailto:comm@subaru4wdclubwa.au)

**MERCHANDISE:**

Adrian Longwood 0424 723 558

**WEBMASTER:**

Rob Griffiths 0411 249 933  
Jim Wilcox 0407 999 268

**4WD ASSOC DELEGATES:**

Adrian Longwood 0424 723 558  
Keith Low 0407 477 980

**MEMBERSHIP CO-ORDINATOR:**

Ross Mead 0417 920 848  
membership@subaru4wdclubwa.au

**PROPERTY OFFICER:**

Tony Richards 0414 224 734

**ENVIRONMENT OFFICER:**

Joy Unno 0429 473 709  
environment@subaru4wdclubwa.au

**SOCIAL MEDIA:**

Vanessa Carn 0412 937 712  
socialmedia@subaru4wdclubwa.au

# Find us on Facebook & Instagram!

IF YOU ARE NOT  
ALREADY A MEMBER OF  
OUR FACEBOOK PAGE  
WHY NOT FIND US AND  
JOIN THE  
CONVERSATION?

WE ARE NOW ON  
INSTAGRAM TOO  
WE'D LOVE YOU TO HELP  
SHARE OUR STORY!  
[@subaru4wdclubwa](https://www.instagram.com/subaru4wdclubwa)



**CLUB MEMBER OF THE YEAR 2022 - 2023**  
ADRIAN LONGWOOD

**LIFE MEMBERS:**

FRED OFFER  
KEITH ANDERSON  
JONEL HOUSEHOLDER  
RAY STEWART  
IAN JOHNSON  
PETER ANDRUSZKIW  
JIM WILCOX  
TONY RICHARDS  
KEITH WILCOX  
DAVID PECK  
ROB GRIFFITHS

# President's Report

David Peck



Presidents Report May 2023

Well April was certainly a busy month with 8 trips & social events happening. I hope you were able to join in on some of them.

This was a great effort by a dedicated group of trip leaders that we have, but we are always looking for more people to lead trips or just help out during a trip.

Graham Webber, who is the chairperson at Track Care, will be a guest speaker at the May meeting. The Subaru club is a member and supporter of Track Care and Graham will tell us about its history and plans for future projects.

Adrian is doing a Camping & Cooking Demo Weekend again. This is a great opportunity for new members to see what camping gear others use and to learn what works well with our cars and to see how people have set them up. The cooking demo is always good with tasty food, just because you are camping doesn't mean you can't eat well!

Cheers  
David

## DISCLAIMER

The material presented and the views expressed in this newsletter are not necessarily those held by the Subaru 4WD Club of Western Australia Inc. Although we make every effort to keep information in the newsletter accurate and non-offensive, we do not guarantee this. If you make use of the information on this site it is at your own risk. We are not liable for any incidental, special or consequential damages arising in relation to use of the material in this newsletter.

## Please remember to support our Sponsors

SUBARU AUSTRALIA

SUBARU WANGARA

SUBARU OSBORNE PARK

RICHARD'S TYREPOWER

PREMIUM SUV OFF ROAD TRAINING

GREENSTONE



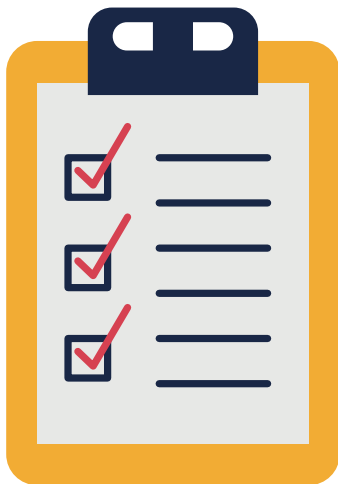
# Writing a Trip Report

Vanessa Carn



On each trip the leader will ask one or more of the members to write a report. If you can't write the report assigned to you, please let the trip leader know. Otherwise, send your trip report(s) in to the trip leader to review and collate as soon after the trip as you can.

Trip leaders please **include photos** with collated reports if you can. Send photos as **separate files**, or send a link to your cloud image storage (eg Dropbox) to share them. Do not embed them in the trip report document(s) as the image quality is reduced if you do.



## Things to include with your report(s):

- Your name
- The trip name
- The date and day of the trip
- Photos - Please name & date all images

Thank you all for your help  
to capture and share our story!



For all your 4WD Subaru tyre and wheel needs, see our friendly sales teams at the following locations:

Belmont  
9277 5418

[www.belmonttyrepower.com.au](http://www.belmonttyrepower.com.au)

Claremont  
9286 2299

[www.claremonttyrepower.com.au](http://www.claremonttyrepower.com.au)

Osborne Park  
9444 2233

[www.osborneparktyrepower.com.au](http://www.osborneparktyrepower.com.au)



PIRELLI

BRIDGESTONE

DUNLOP

Continental

GOODYEAR

FALKEN  
High Performance Tyres

BFGoodrich

MICHELIN  
A better way forward

Cooper  
TIRES

MAXXIS  
TIRES

TOYO TIRES  
driven to perform

YOKOHAMA

Richard's Tyrepower

Osborne Park Belmont Claremont



Tyrepower



# April General Meeting Guest Speaker Uta Bauer on "Eclipses, What's All the Fuss About"



Club member Uta Bauer gave a very interesting and topical presentation on Solar Eclipses, including a spectacular time-lapse photography video of an annular eclipse. Having attended solar eclipses such as the one in the Libyan desert in 2006, and having keen astronomers as friends, she was well qualified to talk about the solar eclipse experience. Solar eclipses generate quite a frenzy, people have even gotten married at eclipses. The Exmouth eclipse is a rare Hybrid - Total changing to Annular (ring of fire) or Partial elsewhere.



<https://www.timeanddate.com/eclipse/total-solar-eclipse.html>

Things to watch out for during the eclipse are a green flash or bright blue, refraction effect, shadow bands, an atmospheric effect causing thin, wavy, light and dark lines that can be seen moving and undulating on white surfaces. Five phases - Partial eclipse, view with solar eclipse glasses (with black frames), shadow bands (diffraction effect), crescent effect, weird shadows (rotate hands 90 degrees to get talon hands). At Totality there are 360 sunset, sweeping shadow rushing in, stars & planets viewable, temperature drops, birds quiet, glasses off, then Bailey's Beads & Diamond ring effect, glasses back on.

Uta provided lots of useful advice for prospective eclipse chasers including buying black-rimmed solar eclipse glasses as the silver rimmed ones have reflections, buying a solar filter for the telescope or cameras, and using a white sheet to see the shadow bands created during a solar eclipse. Shadow bands are thin, wavy, light and dark lines that can be seen moving and undulating on white surfaces. In addition, Uta suggested some helpful references for eclipse chasers such as Alan Dyer's *The Backyard Universe* book and the Time & Date website that has information and videos on eclipses such as the penumbral lunar eclipse on May 5. Lunar eclipses often occur 2 weeks before or after a solar eclipse. Also, there are some handy apps available such as Nightcap, a low light photo, video and time lapse camera app with AI assistant for smart phones, and Solar Eclipse Timer app with the stages of eclipses to use during an eclipse.



# ALL-NEW SUBARU OUTBACK ALL-WHEEL DRIVE

*Turbocharged*



Symmetrical AWD



2.4L Turbocharged  
Boxer Engine<sup>1</sup>

2,400kg  
Braked Towing  
Capacity<sup>2</sup>



11.6" Touchscreen

Subaru Outback AWD Touring XT

## turbocharge your next adventure

With over 25 years of back-to-back innovation, Subaru's most technologically advanced SUV is set to supercharge your adventures. Introducing the all-new Subaru Outback AWD Sport XT and Outback AWD Touring XT, boasting a new 2.4-litre turbocharged horizontally-opposed Boxer engine<sup>1</sup>. Pushing out more power and torque, the turbocharged Boxer engine boasts an impressive braked towing capacity of up to 2,400kg<sup>2</sup>.

Celebrate the new towing capability, and go anywhere Symmetrical All-Wheel Drive, while curating your drive via the 11.6" touchscreen with wireless Apple CarPlay<sup>®</sup> and Android Auto™ smartphone connectivity<sup>3</sup> standard across the range. The Subaru Outback AWD Touring XT redefines comfort and luxury with Nappa leather<sup>4</sup> accented seat trim. Pre-order Subaru's flagship SUV now and discover more power to explore.

Visit your local Subaru Retailer.

1. Subaru Outback AWD Sport XT and Outback AWD Touring XT feature a 2.4-litre turbocharged Boxer engine. 2. Towing capacity is subject to regulatory requirements, tow bar and vehicle design and towing equipment limitations. If the towing mass is greater than 2,000kg, an Electric Brake Controller must be fitted and is only capable of towing a trailer with a maximum of 2 axles. Requires fitment of optional tow bar accessory. Refer to Owner's Manual for towing instructions. For further information, ask your local Subaru Retailer. 3. Compatible Apple<sup>®</sup> or Android™ device required. 4. Nappa Leather seat trim only available on Subaru Outback AWD Touring XT only.





# FAREWELL KARL- WE'LL MISS YOUR SMILING FACE

Karl Boeing, a member of the Club for 20 years is leaving the Club due to ill-health and returning to be with family in Germany.

Karl attended the April General Meeting and many members who had been on trips with Karl attended as well, including former long-time members Simon and Anne Newton who now reside in Queensland. They appeared on Zoom to wish Karl all the best.

Several people gave speeches for Karl - as Club Secretary, Joy thanked Karl for his contribution to the Club with his work setting up and maintaining the original Club website and being such an enthusiastic and cheerful, always smiling trip participant, willing to help anybody who needed it. Keith reminisced about the 3rd Bight Trip where Karl rolled his car into a ditch but cheerfully kept going with the trip. Some people reminisced at how well Karl always managed the camp fire on trips, keen to add the logs on when necessary.

In response, Karl gave a heartfelt talk about the enjoyment that he has experienced on trips and the good friends that he has made in the Club and his acceptance of his illness.

Joy had made a short Powerpoint presentation highlighting some of the trips Karl had been on through the years. Karl was quite chuffed by that as it brought back many happy memories. He has got a copy to show his family in Germany. Karl has donated his camping equipment to the Club.

Happy travels, Karl.



**Stirling Ranges 2010**

## SUBARU 4WD CLUB OF W.A. INC.

### CLUB MERCHANDISE – buy items at the meetings



Bisley khaki 100% cotton long sleeve shirts (in Mens and Women's sizes) are available at a subsidised cost of \$40 with logo (but no name) and \$45. with logo and name. If you buy a shirt from Club stock with no name, you can have your name added later by taking the shirt to Hip Pocket in Balcatta and having it embroidered (on the spot if you ring first) at a cost of \$7.



Royal blue and white ("Contrast") polyester/cotton polo shirts (with pocket) are available at a subsidised cost of \$15



Royal blue and white ("Podium Bold") 100% polyester polo shirts (with pocket) are available at a subsidised cost of \$15.

JBsWear Full Zip Polar Jackets (in Mens and Women's sizes) with logo (to be added) are available for \$36. Details: 100% polyester for durability; 290gsm low pill polar fleece; 2 front pockets; and adjustable elastic hem with toggles



Cap – royal blue and white. Logo to be added. Cost tba



History Books – reduced to \$10



Embroidered Badges – \$5



Club stickers \$3



Navy blue beanies – \$9

The supplier of all Club clothing items is Hip Pocket Workwear & Safety, Balcatta.  
[www.hippocketworkwear.com.au](http://www.hippocketworkwear.com.au)



Flat pack neoprene can coolers – \$5





# CAMPING & COOKING DEMO WEEKEND PROMO

Come along to Pingelly on 13-14 May for a weekend of FUN and FOOD!

## Training topics will include:

Fire Lighting & Building  
Fire Cooking using Jaffle Irons (Toasted Sandwiches)  
Fire Cooking using Cast Iron & Spun Steel Camp Ovens  
Fire Cooking using Frying pans/skillets/grill baskets/hot plates  
Cleaning & Seasoning Cast Iron & Spun Steel

Tent Setup & Packup  
Swag Setup & Packup  
Camper Trailer Setup & Packup

## Equipment Demonstrations will include:

Variety of Chairs - Compact/Lightweight/regular  
Assortment of Tables - Compact/Lightweight/Heat-proof  
Camp Lighting - 12V, Battery, Rechargeable, Gas  
Gas Stoves - LPG vs Propane vs Butane vs Petrol  
Tent Styles - Pop up vs Standard vs Single layer vs Double Layer vs Synthetic vs Canvas  
Swag Styles - Domes vs Apex  
Camper Trailer

## Vehicle Modification and Accessory Explained:

Assorted Member Vehicles explained front to back, inside and out.

## JOIN THE TRIP NOW ON THE CLUB WEBSITE:

<https://www.subaru4wdclubwa.au>



BRING  
YOUR  
MUM!





# DWELLINGUP FOREST DRIVE DAY TRIP

Sunday 26 March by Uta Bauer

Our group of Ben and Anne, Norm, guest Kyle and myself were led by Ross on a very pleasant drive through Jarrahdale to Dwellingup. We departed Byford on time on a somewhat rainy day.

Our first stop in Jarrahdale was to look at an area of virgin Jarrah forest opposite the cemetery. Ross, being a forester had a lot of interesting botanical information for us. We talked about the difference between the Jarrah (*Eucalyptus marginata*), and Marri (*Corymbia calophylla*). Jarrah has dark, stringy bark, and small rounded gum nuts and Marri has tessellated bark and big honky gum nuts. We checked out the snotty gobble plant (*Persoonia longifolia*) and *Acacia littorea* also known as shark tooth.



We continued south down, Yarri Road, and stopped to look at the variation in the forest across the landscape, from a wet gully to the top of a laterite ridge. Laterite soils or gravels are high in aluminium and iron. This was our morning tea stop.

Next we continued to head south and over the Serpentine Dam wall. Drove past several sections of the Alcoa mine site. Stopped opposite Karnet Prison Farm to look at the forest clearing done as part of commencing a new Alcoa mine pit. We admired the butter bark/ghost gums with a beautiful smooth butter coloured trunks. Ross explained to us how the fungus phytophthora can spread via subsurface flow through the lateritic soils.

The forest was burnt every two to three years by the indigenous people compared to now where it's 10 to 20 or more.





# DWELLINGUP FOREST DRIVE DAY TRIP



Headed south along Scarp Rd then west along Gobby Rd. We stopped and walked down to a waterfall on Myara Brook. From here, we headed back south along Scarp Rd for a short distance before heading off along a 4x4 track down to Boyd Rd. Bit tricky in places for newbies like me and I was wary not having the bash plate on yet.

Lunch was further South at the North Dandalup Dam lower picnic area for lunch.



After lunch, we continued South along Scarp Rd then west along the old Whittakers Mill railway formation to Goldmine Hill.

After checking out the old "Lovett's Reward" goldmine, we continued south along Delpark Rd and Scarp Rd to Oakley Dam and the 'infinity pool'.



From Oakley Dam it was on to the Junction of Scarp Rd and the Pinjarra-Williams Rd where we concluded the trip. Norm and Ross headed off to Vergone's Fruit stall in Dwellingup for some home-made Tomato Sauce whilst everyone else headed off back home.

Words – Ross and Uta

Pictures thanks to Kyle



# Premium SUV Offroad Training



Specialist SUV Off Road Driver Training Courses & Products

**BOOK ONLINE**



**Premium SUV Off Road Training**

[www.psot.com.au](http://www.psot.com.au)

\$199 - Introductory Beach Sand Course

\$250 - Intermediate Bush and Sand Course

*Subaru 4WD Club Members receive \$20 discount on all courses. enter "SUB4WDWA" when booking*



## Stockist of Bushranger 4WD Gear

10% off all items in stock.

Air Compressors, Tyre Gauges & Recovery Gear

## BASIC SNATCH KIT

LIGHTWEIGHT & HIGH PERFORMANCE PRODUCTS TO PERFORM A BASIC SNATCH RECOVERY



**2x 3.2T BOW SHACKLE**

- USED FOR CONNECTING EQUALISER BRIDLES TO SMALLER/RECESSED CONNECTION POINTS ON VEHICLES



**4.7T BOW SHACKLE**

- USED FOR SINGLE CONNECTION POINT ON VEHICLES AND TO HITCH BLOCKS



**2x SOFT SHACKLE**

- PREMIUM ULTRALIGHT & FLOATING SOFT SHACKLE.
- USE IN PLACE OF STEEL WHERE POSSIBLE



**STON KINETIC ROPE**

- SUITS VEHICLES FROM 1.8T -> 2.5T GVM
- DURABLE & HIGH PERFORMANCE
- CHOOSE 4T ROPE FOR 1.3T-2T GVM
- CHOOSE 8.5T ROPE 2.8-4.3T GVM



**EQUALISER BRIDLE**

- LIGHT WIEGHT AND FULL SHEATH
- CHOOSE EITHER 3M /5M LENGTH
- CARRY AT LEAST 1 IN YOUR KIT AND ENSURE OTHER VEHICLES IN CONVOY ALSO HAVE 1



**STURDY GLOVES**

- A PAIR OR 2 OF WORK GLOVES



**ALLOY HITCH**

- 50x50mm SLIDE IN HITCH FOR TOWBAR
- ULTRALIGHT ALLOY
- SUITS 4.7T BOW SHACKLE
- ROUNDED EDGES FOR SOFT SHACKLE (FITS UPTO 12mm SOFT SHACKLES)



**DAMPENER BLANKET**

- ESSENTIAL SAFETY EQUIPMENT
- TWO ARE ADVISED TO ENSURE THE SAFEST RECOVERY IS POSSIBLE
- PICK A VERSION WITH 2 POCKETS AND REFLECTIVE TAPE



**SMALL KIT BAG**

- SMALL KIT BAG TO SAVE SPACE
- CLEAR TOP FOR EASY VIEWING

**rrp \$550~**

[www.psot.com.au](http://www.psot.com.au) | 0424723558 | Perth, WA



# KAARAKIN CLEANUP 02 APRIL

On Sunday 2 April three Subaru Club members joined the Southside 4WD Club at Kaarakin Black Cockatoo Conservation Centre for a busy bee cleaning up the building and gardens used by the WA 4WD Association for meetings and other functions. We were not cleaning the meeting room as that had no power. Instead meetings have been held in the building that used to be a revolving restaurant with a kitchen in the middle

Joy got the spider broom and tackled the many cobwebs along the windows and ceiling, Naomi thoroughly cleaned the ablution block and Graeme helped clean the gutters and rake up leaves. We had a nice morning tea put on by Southside in the restaurant building which has a spectacular view over the city. Joy Unno





# SEVEN SINS LUNCH

After the **Kaarakin Cleanup** on Sunday 2 April, we went to Naomi & Graeme's place to freshen up and then went to lunch at the **Seven Sins Restaurant** in Roleystone. This place had a great atmosphere and a spectacular view over the forested valley.

The food is magnificent with good sized servings. I can vouch for the **Steak Sandwich** and the **Sticky Date Pudding**. Naomi tried the custom-brewed cider sampler and declared that the Peach Cider was her favourite.

It's a great place to have a birthday as the wait staff put on quite the show bringing out the sparkler-adorned birthday cake and getting the whole clientele involved in a rousing chorus of the **Happy Birthday Song** 😊

Joy Unno





**Subaru 4WD Club of WA Member offers**

**10% off**  
**your next service\***



**exclusive  
to  
Subaru  
Osborne Park**

**free**  
**window tint\***  
**with any new purchase**



At Subaru Osborne Park we are here to help and we pride ourselves on putting you our customer, first.

435 Scarborough Beach Rd, Osborne Park WA 6017 | Call us today on 08 9273 2777

License Number DL17103.

**Subaru  
Osborne Park**



\*This ad must be presented at the time of service booking to receive the 10% discount & free window tint offer. Free window tint only available with new purchases. Offers only valid until 31st December 2023. May not be used in conjunction with any other discounts or offers.

# Trips & Socials

Please refer to the club website for all dates & details  
[www.subaru4wdclubwa.asn.au](http://www.subaru4wdclubwa.asn.au)

New members are advised that UHF radio's are required for all club trips.

They can be hired from the club by indicating on the website when you put your name down for a trip or by contacting trips co-ordinator Adrian on 0424 723 558 or email [trips@subaru4wdclubwa.au](mailto:trips@subaru4wdclubwa.au)

## MAY 2023

 **GASTRONOMIC GOOSEBERRY HILL AND MEANDERING TO MUNDARING**

6 May Saturday

**CAMP FIRE COOKING/Camping Demo**

13 - 14 May  
Adrian Longwood

**AVON/JULIMAR/WANDOO**

27-28 May

## JUNE 2023

**NORTHCLIFFE BUSH CAMP**


3 - 5 June LWE

 **KAARAKIN CLEAN-UP DAY**

11 June

**FOREST CAMPING**  
24-25 June

## JULY 2023

 **FIDDLES n NIBBLES**  
Jim Wilcox  
09 July

## AUGUST 2023

**GRANITE WAY**

12 - 13 August

**COALSEAM NP**

26-27 August



## SEPTEMBER 2023

**LWE JAURDI HEL-AUR RANGES**

23 - 28 September



The Club is running trips for members in accordance with the latest advice issued by the WA State Government COVID-19 Guidelines.



# LETS HAVE A PEAK AT CHARLES

Day One - Friday 07 April 2023

Maria DeYoung

A cool breeze was coming through on Good Friday morning. We were standing outside the Byford library dressed in pants and sweaters while Ross ran through the trip basics and protocols. After a quick stop at the Byford Roadhouse the fun began.

We started east through Jarrahdale to Narrogin with plans to continue on through Harrismith and Lake Grace before stopping for fuel at lake King. After a quick stop in Narrogin for a breathalyser at 10 am by the local police, we continued east as far as Newdegate before stopping for lunch. Although small, there was a cute rose garden set up with a picnic area for us to use.

Passed plenty of large lakes along the way out to Lake King with Lake Grace being the biggest. We stopped to refuel at the Lake King 24 hr fuel station (Card only). Whilst there, a group of touring motor bike riders came in for fuel. They were riding all-road touring bikes loaded up with camping gear. One even had a side-car to carry his stuff in. We were to meet them several times down the track.

After refuelling, it was off out the Lake King – Norseman Road. The first section of the road was fairly well maintained until we hit the Shire of Esperance boundary. Then the corrugations and large potholes came. You certainly had to keep a close eye on the road as the large holes were often difficult to see. The corrugations had me wishing I had let some air out of my tires.

Along the way, comment was made about the squiggly line along the road. It was surmised that they were bicycle tracks. And so they were. We met the cyclist approximately 10km west of the 90 mile tank. He was wandering all over the road trying to dodge the worst of the holes and corrugations.

With rain clouds gathering, we pulled up at a spot called the 90 Mile Tank which was basically a little road around what used to be a tin roof structure and a tank in the middle. Now the sheets of tin were mostly fallen down and the structure looked hazardous. Camp for the evening was set up in the lee of the tank literally in the bush (good thing I brought a tarp for the ground). The group of motorcyclists we saw at Lake King who were travelling the same road as us decided to use the structure for shelter. Luckily we were able to set up, have dinner and have an evening chat before the rains came in at about 9pm.

We all went to sleep with the sound of rain beating on the outside of our tents and wondering what the place would look like in the morning.



I woke to the sound of steady rain around 4am. The forecast predicted 10ml but with the consistency and sound of the rain on my tent I think it had been more! Unfortunately, my well-loved Caribe 2 tent leaked water during the night. Another indication of the amount of rainfall! Later at Peak Charles Ross made a suggestion for pegging the door so this does not occur!



The rain eased as we packed up wet gear and had breakfast. We set off from 90 Mile Tank for the 77km trip to Peak Charles under heavy, overcast skies and light rain. It soon became clear the road was going to be challenging with ongoing corrugations and puddles, some of them large – and mud, lots of mud!

The going was very slow, driving to the conditions. The convoy slipped and slid through mud patches some requiring calculated and careful approach and management! Yes, read here sometimes sliding sideways! At one point we came across a 'puddle' that extended right across the road. Maria set off to determine depth with a suitably lengthy stick and assess the best approach for traversing the mini lake. After some discussion agreement was made and we all successfully got past with only the left side of our cars entering the water.



It took us an hour to traverse 30km! We met a vehicle coming the other way and Ross engaged them in conversation to find out what the road was like for our planned return to Lake King the following day. The driver advised a group had driven in the evening before and had become bogged in the middle of the track and had to be pulled out! This informed plans for our trip out!

As we got closer to the Peak Charles turnoff the vegetation began to change and had the familiar look of the Western Woodlands. The group stopped for a well-earned morning tea break at the Peak Charles turn-off to reflect on our journey so far for the day and fortify ourselves with raspberry and choc chip muffins. We had just driven the 57 km from our camp at 90 Mile Tank in 1 hr and 45 minutes! The 20km trip into Peak Charles was on a road which was very corrugated in places, muddy but seemed a little 'easier' than the Lake King/Norseman Road.



After leaving our camp at 90 Mile Tank at 0900 hrs, we arrived at Peak Charles at 1150 hrs after travelling 77 km. As we arrived the summit was obscured by low cloud. I suggested we had come to have a peek at Peak Charles but instead Peak Charles was peeking at us from behind the cloud!



After scouting out the main camp ground Ross took us a little further back into a suitable camping spot in some beautiful bush. It was still an easy walk to the toilet! We set up our tents to dry them out. I put my awning out to provide protection from the rain. Lunch was enjoyed before setting off to explore Peak Charles. Whilst still cloudy it had stopped raining!

There were three walks – Mushroom Rock (800m), Central Ridge (2.2km) and the Summit. The summit climb is not marked, in excess of the Grade 5 rating and suggested for very experienced rock climbers only. We decided to try for Mushroom Rock first to see how we went. The rocks were very wet and some parts steep with no obvious foot holds. It was great seeing the vegetation on the way up and negotiating the path where it existed! Before long the group found themselves at Mushroom Rock. It looks just like a mushroom with interesting formations underneath the ‘cup’ and on the ‘stem’. At one point on the way to Mushroom Rock I was fascinated to find a little ‘bee cave’. It was a hollow in the rock with an overhang and a puddle. There were so many bees here drinking the water!



**Mushroom Rock**

From Mushroom Rock we decided to walk on to see how far we could get and two did get to the end of the Central Ridge with the other two very close. We were about 460m up which afforded us fantastic views across lakes, bush and the road in. At one point you can see across to Mt Eleanora. Due to road conditions and being unable to travel that way, this was the best view we would have. There was a varied assortment of plants that were quite green and healthy given the conditions they live in. Raindrops on their branches looked like jewels. We took the descent gently gauging the slipperiness underfoot as we went! Some of us adopted a crab stance to get safely down some of the steeper sections without clear footholds!



We carefully negotiated the downhill trail back to our campsite to enjoy afternoon tea and see how the drying out process was going! There was some very light intermittent rain but nothing like the night before. All of us took a nap in our tents for an hour or so. In the evening it wasn't really conducive to building a campfire so we gathered under Ross' awning for a while. We heard a fluttering of feathers in the dark and it wasn't until we heard a bird call and investigated found it was a marvellous owl in a dead tree very close by. It was an amazing experience but flew off before any of us could get a photo! I think it was a Boobook but the call heard was not what you would associate with it. When I got home and investigated, their range of calls can include the one we heard.

It was a very peaceful night with no rain and so lovely to wake the following morning to the sound of bird song – and sunshine!



Purchase a new Subaru from Subaru Wangara and receive a

# \$500 Genuine Subaru voucher for accessories\*



**exclusive Subaru 4WD Club of WA members offer**



Contact a Sales Consultant for more information  
(08) 9309 7888

At Subaru Wangara we are proud to stock one of Perth's largest ranges of new Subaru models. So come down and speak to our team to redeem our exclusive Subaru 4WD Club of WA members offer.

[new@subaruwangara.com.au](mailto:new@subaruwangara.com.au)  
[subaruwangara.com.au](http://subaruwangara.com.au)

  @SubaruWangara

At Subaru Wangara we are here to help and we pride ourselves on putting you, our customer, first.  
10 Berriman Drive, Wangara | Call us today on (08) 9309 7888  
DL17103 - MRB 1854

Subaru  
Wangara



Terms and conditions apply. This ad must be mentioned when purchasing a new Subaru at Subaru Wangara. Offer is not transferrable or redeemable for cash. Offers only valid until 31st December 2023. See Instore for full terms and conditions.





Overnight the rain had cleared and I woke to a beautiful clearing sky with sun shining through broken cloud to the East. The Peak was still shrouded in cloud which persisted until 8:00. We had a pleasant time to have breakfast and break camp before setting off at 9:00 for the drive to Norseman. Ross had changed the original plan to return to the south of Peak Charles after hearing reports of poor road conditions and the rain we had yesterday. Plan B was to go to Hyden via Norseman on a good gravel road. However this was not a certainty because the Hyden road may also be closed due to the rain. We hoped it might open by the time we arrived.

From Peak Charles, the drive to Norseman was half on dirt (approx. 50km) with some muddy bits but not nearly as bad as yesterday's conditions. We again met the lone cyclist making his way east who informed Ross he had managed the mud well. He deserved praise for tackling those conditions. We stopped at the end of the Lake King – Norseman Road to scrape some of the mud from our car's wheel arches and rims. Afterwards, there were 16 piles of mud on the edge of the road. The remaining 50 km was easy driving on the Coolgardie-Esperance highway.



At Norseman, I filled one of the two jerry-cans I had and topped up with fuel. There was disappointment on finding the "Road Closed" barriers still up at the Hyden Road turnoff. Here we were forced to invoke plan C; the long way round north to Coolgardie and on to Perth via the Great Eastern Highway. It was considerably more distance but much faster travelling. At Southern Cross we refuelled; I simply used my second jerry-can which was enough to get me home.

We continued to Bodallin where Deb and Ross conjured up a delightful camping area at a dam a few kilometres from the town. The first site we found was fully occupied with caravan, trailer and kids but a more rugged side road led to a nice spacious area with good camp sites and a fireplace. There was an old baker's oven and boiler suggesting past industrial use. Arriving at 17:00 hrs, we immediately set up camp and cooked dinner. Meanwhile Maria and Ross lit a fire allowing us to enjoy the best of camping while spinning yarns in good company on a mild cloudless evening. We were only denied a view of the Milky Way because it was obscured by a bright moon (yes even at 03:00 hrs it was too bright).



## Peak Charles Day 4 Monday 10 April Ross Mead

What a glorious morning. Bright sunshine, no wind, birds singing and all is well in the world.

We camped overnight at Bodallin Dam in a great spot amongst tall trees. Last night was the quintessential night camp. That is, no rain, no wind, stars shining brightly, great camp fire and good companions to share it with (along with a wee dram of the golden liquid). After the previous two nights of rain and wind, it restored our faith in camping.

Bodallin Dam was built in 1894 to provide water for the steam trains on the goldfields line which passed through Bodallin about 4 km away. There was a good quantity of water in the dam which is obviously still regularly used by the local people as their swimming pool. Apparently, the dam has never dried out since it was built.

There are the remains of a baker's oven at the camping area. The ruins of the bakery is reported to be located just north of the dam. A great story recorded about the dam is that the man employed to run the steam pump which supplied water from the dam to the Bodallin railway tank when it was first used, was dismissed not long after he started on the job. Apparently, he discovered that the water would syphon directly from the dam to the tank so he was able to just turn the valve on and then retire to the pub for the day. Unfortunately for him, his lack of work ethic was discovered and his employment terminated forthwith.



After a casual breakfast and explore around the dam, we were all packed up and hit the road home about 0900 hrs. The trip was uneventful with a morning tea stop at Cunderdin. Unfortunately, the coffee van was not there. The traffic was generally mild with the occasional road-works being the main source of frustration requiring us to slow to 60 km/hr to travers sections of what appeared to be quite good road.

The formal part of the trip ended at Sawyers Valley with each of us taking our own way home from there. I wasn't sure if Deb Thyne was going to get home as she kept muttering about heading to the Eyre Peninsula early.

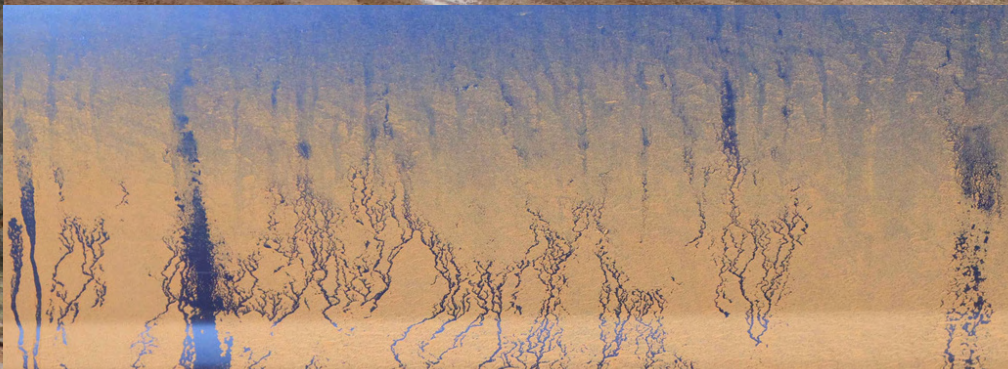
I arrived home about 1330 hrs. All I had to do then was unpack the car, clean and dry all my camping gear. After that, the high pressure cleaner was used to remove the large amount of mud from the Forester. There are now patches of brown mud on my front grass verge.

All told, a great trip. We had lots of adventures getting to Peak Charles but we did get to climb it. Our Foresters performed admirably and thankfully, everyone got home in one piece.



# LETS HAVE A PEAK AT CHARLES

Take a look at more photos from the Peak Charles trip. Peppa Pig would be green with envy at all the Muddy puddles!



Mud Art on car door



# LETS HAVE A PEAK AT CHARLES







# Greenstone

Accounting & Business Services

You love exploring and so do we. We're named after New Zealand's wild **Greenstone River.**

With over **15 years experience** in small business and personal tax and accounting, we save you time and money, so you can enjoy more of the great outdoors.

Book a phone appointment or meet in-person at our Inglewood office.

## Get In Touch

0419 147 650 / [tom@greenstoneaccounting.com.au](mailto:tom@greenstoneaccounting.com.au) / [www.greenstoneaccounting.com.au](http://www.greenstoneaccounting.com.au)

Business Tax Advice / Start Up Businesses / Business Structure Advice / Income Tax Return Preparation / Financial Statements / BAS Preparation / Bookkeeping